



4	NCC Office	2	2	2	0	0	0	0	0	0	6	0	0
5	Girls Gym	6	0	10	0	0	0	0	0	0	0	0	0
	RATO Office	2	0	4	0	0	0	0	0	0	0	0	0
6	Store	4	5	0	0	0	0	0	2	0	0	0	0
7	Parents Lounge	3	0	5	0	0	0	0	0	0	0	0	0
8	Sr Bhavan	39	0	32	1	56	4	2 x 1 HP	0	1	4	0	1
9	Jr Bhavan	40	0	34	1	54	4	2 x 1 HP	0	1	5	0	1
10	Girls Hostel	25	0	36	1	52	6	2 x 1 HP	0	1	6	0	1
11	B Mess	10	0	9	1	0	2	0	0	0	0		0
12	Principle Bunglow	3	4	4	0	0	1	2x 1 HP	1	0	6	0	0
13	Campus Area / Including DO office & Gate.	0	4	3	0	0	0	2 x 3 HP	1	0	15	0	0
14	Ram Mandir	2	2	8	0	6	0	0	4	0	7	0	0
15	College Canteen	0	0	0	0	0	0	0	0	0	0	0	0
Total		339	139	296									

Maintance Inchargr  
Campus Co-ordinetor  
B R Mogal  
Dr. S.R.Kankrej

2019-2018

7.1.2 - The Institution has facilities for alternate sources of energy and energy conservation measures Solar energy Biogas plant Wheeling to the Grid Sensor based energy conservation Use of LED bulbs/ power efficient equipment

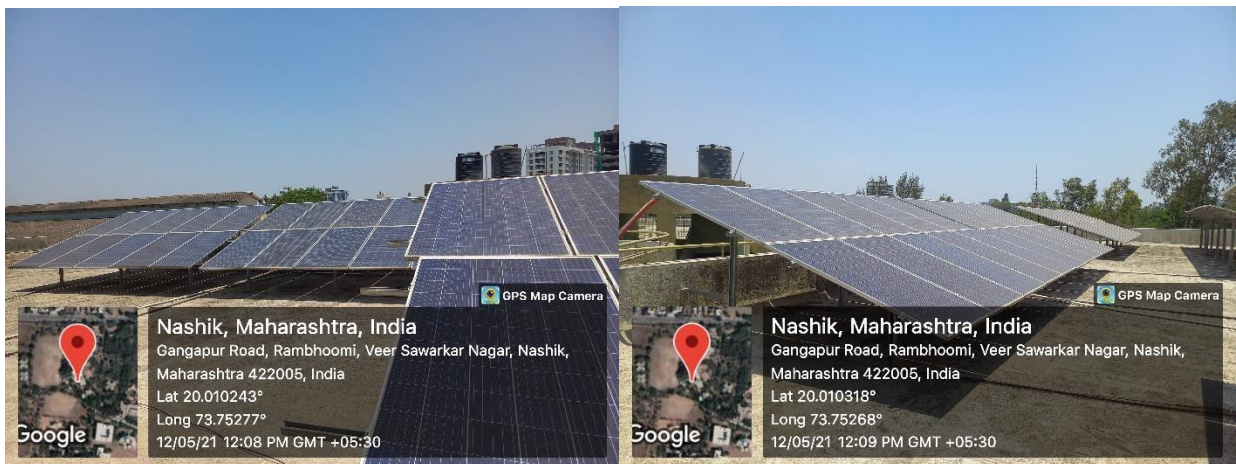
**SUMMARY OF ELECTRIC ITEMS IN BHONSALA MILITARY COLLAGE 2019-20**

S.N O 1	LOCATI ON	CEILLI NG FAN	40 W TUB E LIG HT	20 W LED TUB E LIG HT	WAT ER COOL ER	9W BU LB	EXHA UST FAN	ELECT RIC PUMP	WA LL FA N	GEYZ ER	STRE ET LIGH T 18W	FRID GE	T V
2	College Buildin g	239	133	172	4	25	12	4 x 1 HP	4	0	4	1	0
3	Gymkh ana	4	3	4	0	0	0	0	0	0	0	0	0
4	NCC Office	3	3	3	0	0	0	0	0	0	6	0	0
5	Girls Gym	8	0	12	0	0	0	0	0	0	0	0	0
	RATO Office	3	0	5	0	0	0	0	0	0	0	0	0
6	Store	4	7	0	0	0	0	0	2	0	0	0	0
7	Parents Lounge	3	0	6	0	0	0	0	0	0	0	0	0
8	Sr Bhavan	39	0	42	1	56	4	2 x 1 HP	0	1	4	0	1
9	Jr Bhavan	40	0	42	1	54	4	2 x 1 HP	0	1	5	0	1
10	Girls Hostel	30	0	44	1	52	6	2 x 1 HP	0	1	6	0	1
11	B Mess	12	0	14	1	0	2	0	0	0	0		0
12	Principl e Bunglo w	5	5	4	0	0	1	2x 1 HP	1	0	6	0	0
13	Campu s Area / Includi	0	6	3	0	0	0	2 x 3 HP	1	0	15	0	0

	ng DO office & Gate.												
14	Ram Mandir	4	4	9	0	6	0	0	7	0	7	0	0
15	College Canteen	0	0	0	0	0	0	0	0	0	0	0	0
	TOTAL	441	182	422	8	193	29	14	16	3	53	2	3

## 2020-2021

7.1.2 - The Institution has facilities for alternate sources of energy and energy conservation measures  
 Solar energy Biogas plant Wheeling to the Grid Sensor based energy conservation Use of LED bulbs/  
 power efficient equipment **Solar System**



Wheeling to the Grid

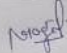


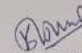
Use of LED Bulb



**SUMMARY OF ELECTRIC ITEMS IN BHONSALA MILITARY COLLAGE. 2020-21**

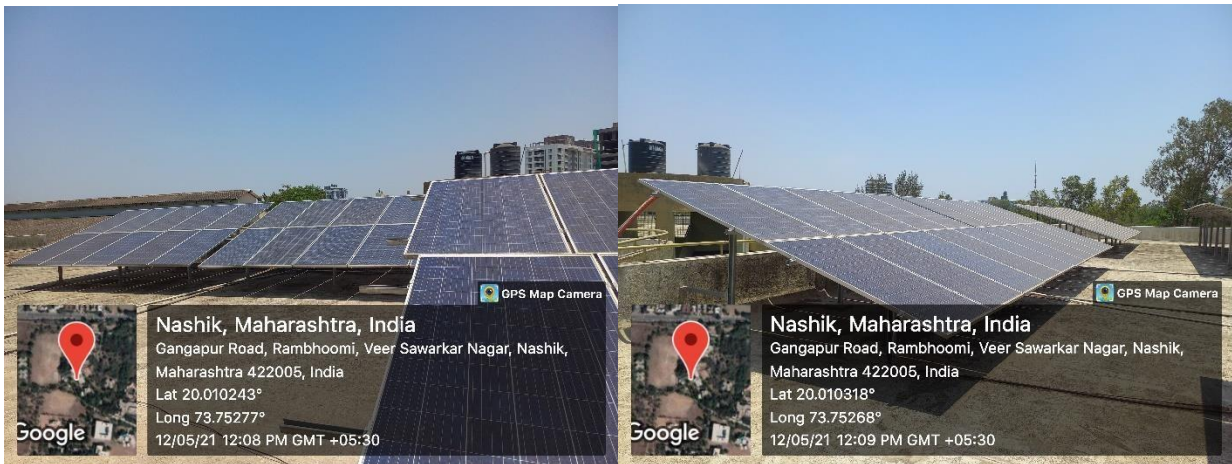
S.NO	LOCATION	CEILING FAN	40W TUBE LIGHT	20W LED TUBE LIGHT	WATER COOLER	9W BULB	EXHAUST FAN	ELECTRIC PUMP	WALL FAN	GEYZER	STREET LIGHT 18W	FRID GE	TV
1.	College Building	239	133	172	4	25	12	4 x 1 HP	4	0	4	1	0
2.	Gymkhana	4	3	4	0	0	0	0	0	0	0	0	0
3.	NCC Office	3	3	3	0	0	0	0	0	0	6	0	0
4.	Girls Gym	8	0	12	0	0	0	0	0	0	0	0	0
5.	RATO Office	3	0	5	0	0	0	0	0	0	0	0	0
6.	Store	4	7	0	0	0	0	0	2	0	0	0	0
7.	Parents Lounge	3	0	5	0	0	0	0	0	0	0	0	0
8.	Sr Bhavan	39	0	42	1	56	4	2 x 1 HP	0	1	4	0	1
9.	Jr Bhavan	40	0	42	1	54	4	2 x 1 HP	0	1	5	0	1
10.	Girls Hostel	30	0	44	1	52	6	2 x 1 HP	0	1	6	0	1
11.	B Mess	12	0	14	1	0	2	0	0	0	0	0	0
12.	Principle Bungalow	5	5	4	0	0	1	2x 1 HP	1	0	6	0	0
13.	Campus Area / Including DO office & Gate.	0	6	3	0	0	0	2 x 3 HP	1	0	15	0	0
14.	Ram Mandir	4	4	9	0	6	0	0	7	0	7	0	0
15.	College Canteen	0	0	0	0	0	0	0	0	0	0	0	0
	<b>TOTAL</b>	<b>394</b>	<b>161</b>	<b>360</b>	<b>8</b>	<b>193</b>	<b>29</b>	<b>14</b>	<b>16</b>	<b>3</b>	<b>53</b>	<b>2</b>	<b>3</b>

  
 Maintenance In-charge  
 Mr. B.R. Mogal
 

  
 IQAC In-charge  
 Dr. Bharat Gugane

## 2021-2022

7.1.2 - The Institution has facilities for alternate sources of energy and energy conservation measures  
 Solar energy Biogas plant Wheeling to the Grid Sensor based energy conservation Use of LED bulbs/  
 power efficient equipment **Solar System**



Wheeling to the Grid





Use of LED Bulb





**SUMMARY OF ELECTRIC ITEMS IN BHONSALA MILITARY COLLAGE 2021-22**

S.NO	LOCATION	CEILING FAN	40W TUBE LIGHT	20W LED TUBE LIGHT	WATER COOLER	9W BULB	EXHAUST FAN	ELECTRIC PUMP	WALL FAN	GEYZER	STREET LIGHT 18W	FRIDGE	TV
1.	College Building	239	133	172	4	25	12	4 x 1 HP	4	0	4	1	0
2.	Gymkhana	4	3	4	0	0	0	0	0	0	0	0	0
3.	NCC Office	3	3	3	0	0	0	0	0	0	0	0	0
4.	Girls Gym	8	0	12	0	0	0	0	0	0	0	0	0
5.	RATO Office	3	0	5	0	0	0	0	0	0	0	0	0
6.	Store	4	7	0	0	0	0	0	2	0	0	0	0
7.	Parents Lounge	3	0	6	0	0	0	0	0	0	0	0	0
8.	Sr Bhavan	39	0	42	1	56	4	2 x 1 HP	0	1	4	0	1
9.	Jr Bhavan	40	0	42	1	54	4	2 x 1 HP	0	1	5	0	1
10.	Girls Hostel	30	0	44	1	52	6	2 x 1 HP	0	1	6	0	1
11.	B Mess	12	0	14	1	0	2	0	0	0	0	0	0
12.	Principle Bungalow	5	5	4	0	0	1	2x 1 HP	1	0	6	0	0
13.	Campus Area / Including DO office & Gate.	0	6	3	0	0	0	2 x 3 HP	1	0	15	0	0
14.	Ram Mandir	4	4	9	0	6	0	0	7	0	7	0	0
15.	College Canteen	0	0	0	0	0	0	0	0	0	0	0	0
	<b>TOTAL</b>	<b>394</b>	<b>161</b>	<b>360</b>	<b>8</b>	<b>193</b>	<b>29</b>	<b>14</b>	<b>16</b>	<b>3</b>	<b>53</b>	<b>2</b>	<b>3</b>

*Mogal*

Maintenance In-charge  
Mr. B.R. Mogal

*Bharat*

IQAC In-charge  
Dr. Bharat Gugane

**2022-2023**

7.1.2 - The Institution has facilities for alternate sources of energy and energy conservation measures Solar energy Biogas plant Wheeling to the Grid Sensor based energy conservation Use of LED bulbs/ power efficient equipment use of Solae energy in college



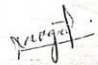
Wheeling of the Grid

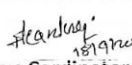


## Use of LED bulbs/ Power efficient equipment

**SUMMARY OF ELECTRIC ITEMS IN BHONSALA MILITARY COLLEGE 2022-23**

S NO	LOCATION	CEILING FAN	40W TUBE LIGHT	20W LED TUBE LIGHT	WATER COOLER	9W BULB	EXHAUST FAN	ELECTRIC PUMP	WALL FAN	GEYZER	STREET LIGHT 18W	FRIDGE	TV
1	College Building	269	150	196	4	25	12	4 x 1 HP	6	0	4	1	0
2	Gymkhana	5	4	5	0	0	0	0	0	0	0	0	0
3	NCC Office	4	4	3	0	0	0	0	0	0	6	0	0
4	Girls Gym	10	0	14	0	0	0	0	0	0	0	0	0
5	RATO Office	3	0	5	0	0	0	0	0	0	0	0	0
6	Store	5	8	0	0	0	0	0	2	0	0	0	0
7	Parents Lounge	3	0	6	0	0	0	0	0	0	0	0	0
8	Sr Bhavan	39	0	52	1	56	4	2 x 1 HP	0	1	4	0	1
9	Jr Bhavan	40	0	54	1	54	4	2 x 1 HP	0	1	5	0	1
10	Girls Hostel	40	0	56	1	52	6	2 x 1 HP	0	1	6	0	1
11	B Mess	14	0	14	1	0	2	0	0	0	0	0	0
12	Principle Bunglow	5	6	4	0	0	1	2 x 1 HP	1	0	6	0	0
13	Campus Area / Including DO office & Gate.	0	6	3	0	0	0	2 x 3 HP	1	0	15	0	0
14	Ram Mandir	4	4	10	0	6	0	0	6	0	7	0	0
15	College Canteen	0	0	0	0	0	0	0	0	0	0	0	0
	<b>TOTAL</b>	<b>441</b>	<b>182</b>	<b>422</b>	<b>8</b>	<b>193</b>	<b>29</b>	<b>14</b>	<b>16</b>	<b>3</b>	<b>53</b>	<b>2</b>	<b>3</b>

  
 Maintance Incharge  
 B R Mogal

  
 Campus Cordinetor  
 Dr. S R Kankrej